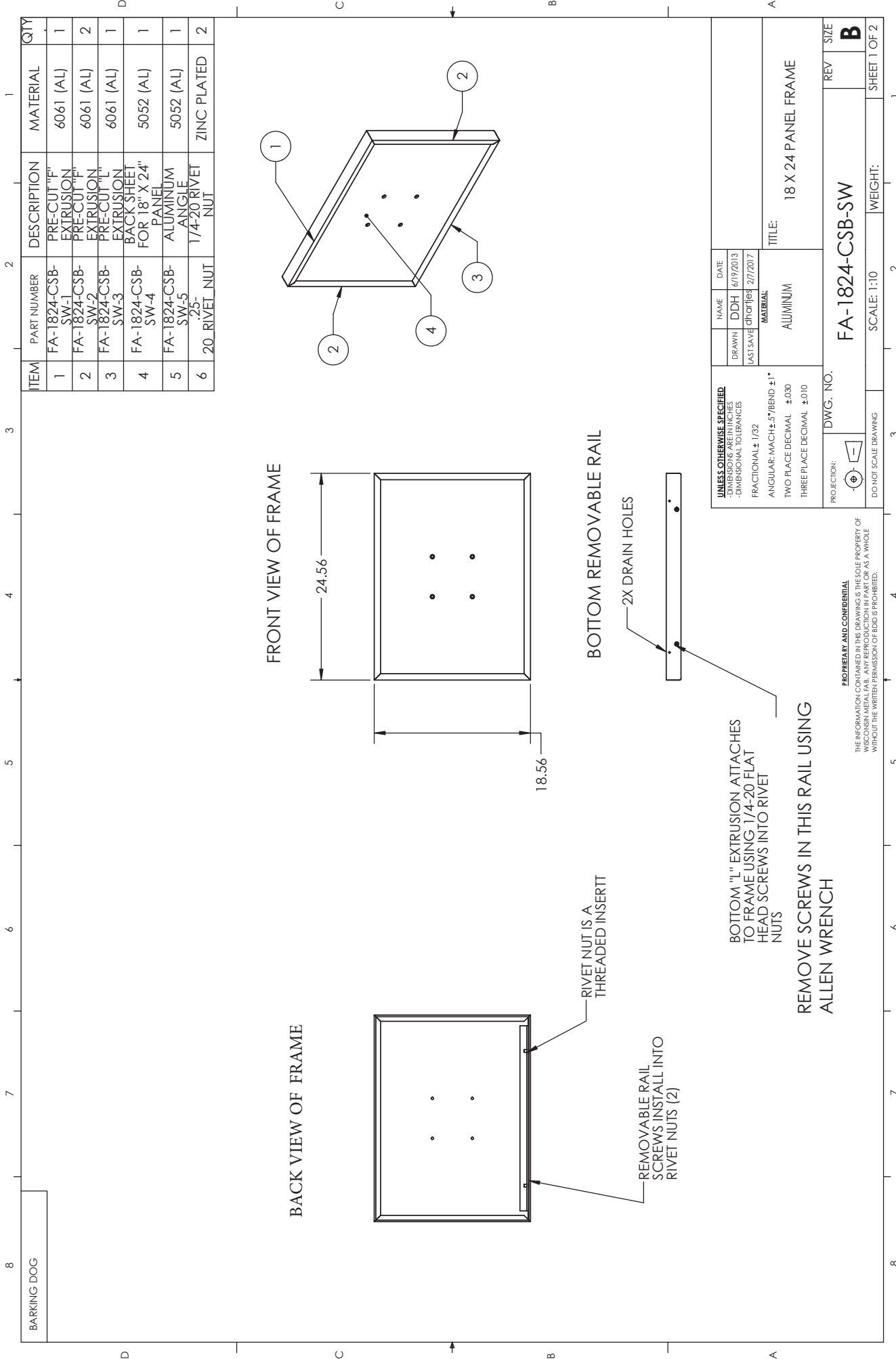


# HOW TO REMOVE THE BOTTOM FRAME RAIL OF A FRAME



ITEM	PART NUMBER	DESCRIPTION	MATERIAL	QTY
1	FA-1824-CSB-SW-1	PRE-CUT "L" EXTRUSION	6061 (AL)	1
2	FA-1824-CSB-SW-2	PRE-CUT "L" EXTRUSION	6061 (AL)	2
3	FA-1824-CSB-SW-3	PRE-CUT "L" EXTRUSION	6061 (AL)	1
4	FA-1824-CSB-SW-4	BACK SHEET FOR 18" X 24" PANEL	5052 (AL)	1
5	FA-1824-CSB-SW-5	ALUMINUM ANGLE	5052 (AL)	1
6	20_RIVET_NUT	1/4-20 RIVET NUT	ZINC PLATED	2

UNLESS OTHERWISE SPECIFIED -DIMENSIONS ARE IN INCHES -DIMENSIONAL TOLERANCES FRACTIONAL ± 1/32 ANGULAR: MACH ± .5° BEND ± 1° TWO PLACE DECIMAL ± .030 THREE PLACE DECIMAL ± .010		NAME DDH	DATE 6/19/2013
DRAWN LAST SAVE		CMT/ISS 2/7/2017	
MATERIAL ALUMINUM		TITLE: 18 X 24 PANEL FRAME	
DWG. NO. FA-1824-CSB-SW		REV	SIZE B

PROJECTION: FIRST ANGLE	SCALE: 1:10	WEIGHT:	SHEET 1 OF 2
----------------------------	-------------	---------	--------------

**PROPRIETARY AND CONFIDENTIAL**  
THE INFORMATION CONTAINED IN THIS DRAWING IS THE SOLE PROPERTY OF BARKING DOG. IT IS TO BE USED AS A WHOLE WITHOUT THE WRITTEN PERMISSION OF BARKING DOG.

BOTTOM "L" EXTRUSION ATTACHES TO FRAME USING 1/4-20 FLAT HEAD SCREWS INTO RIVET NUTS  
REMOVE SCREWS IN THIS RAIL USING ALLEN WRENCH

RIVET NUT IS A THREADED INSERT  
REMOVABLE RAIL SCREWS INSTALL INTO RIVET NUTS (2)

BARKING DOG