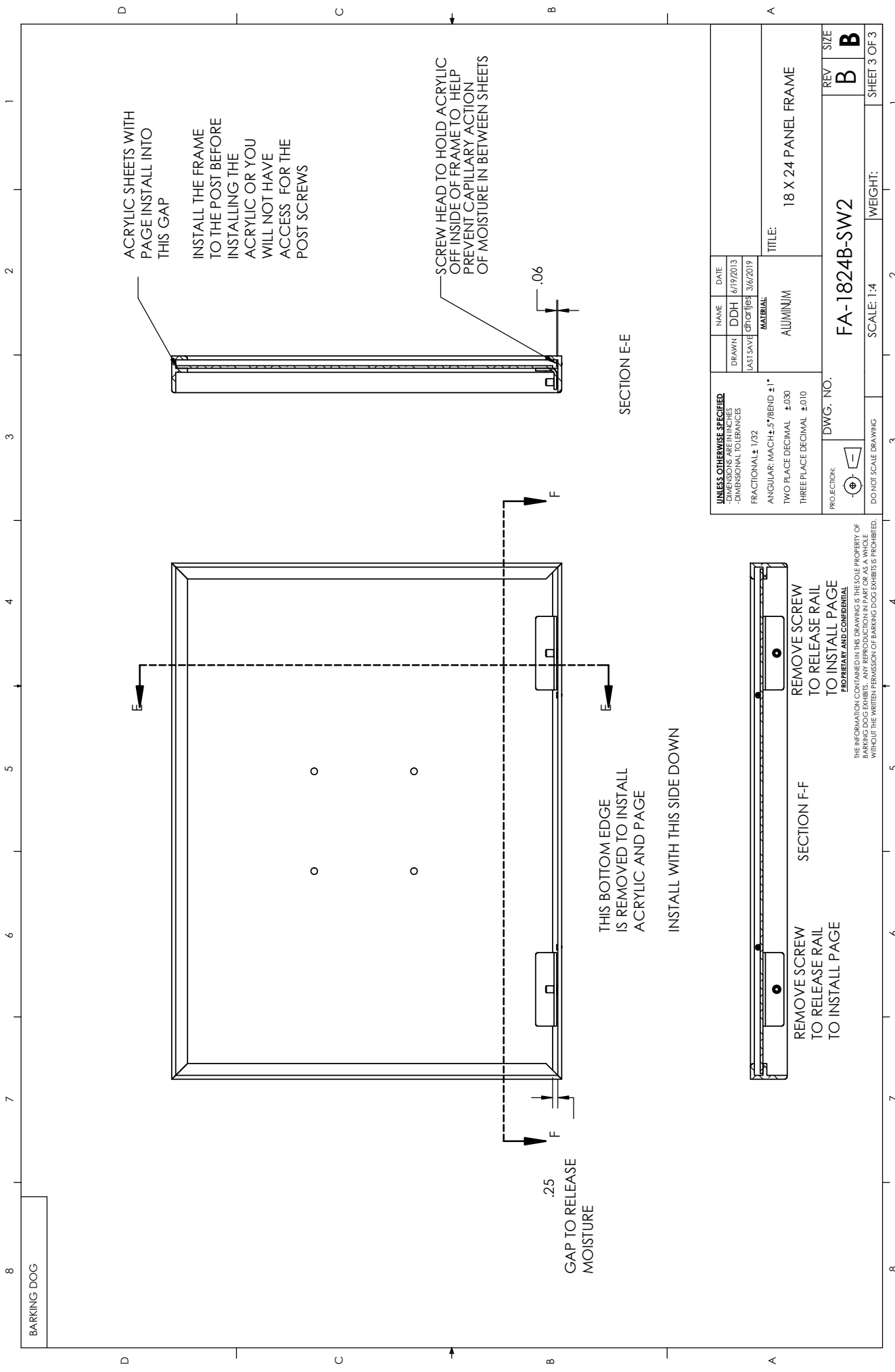


BACK AND SIDE VIEW OF STORYWALK SOLUTIONS FRAME



BARKING DOG

ACRYLIC SHEETS WITH PAGE INSTALL INTO THIS GAP

INSTALL THE FRAME TO THE POST BEFORE INSTALLING THE ACRYLIC OR YOU WILL NOT HAVE ACCESS FOR THE POST SCREWS

SCREW HEAD TO HOLD ACRYLIC OFF INSIDE OF FRAME TO HELP PREVENT CAPILLARY ACTION OF MOISTURE IN BETWEEN SHEETS

.25 GAP TO RELEASE MOISTURE

THIS BOTTOM EDGE IS REMOVED TO INSTALL ACRYLIC AND PAGE

INSTALL WITH THIS SIDE DOWN

SECTION E-E

SECTION F-F

REMOVE SCREW TO RELEASE RAIL TO INSTALL PAGE

REMOVE SCREW TO RELEASE RAIL TO INSTALL PAGE

UNLESS OTHERWISE SPECIFIED -DIMENSIONS ARE IN INCHES -DIMENSIONAL TOLERANCES FRACTIONAL $\pm 1/32$ ANGULAR: MACH $\pm .57^\circ$ BEND $\pm 1^\circ$ TWO PLACE DECIMAL $\pm .030$ THREE PLACE DECIMAL $\pm .010$		NAME DDH	DATE 6/19/2013
DRAWN LAST SAVE		CROTCHET 3/6/2019	
MATERIAL ALUMINUM		TITLE: 18 X 24 PANEL FRAME	
DWG. NO. FA-1824B-SW2		REV	SIZE B
SCALE: 1:4		WEIGHT: SHEET 3 OF 3	

PROJECTION:
DO NOT SCALE DRAWING

THE INFORMATION CONTAINED IN THIS DRAWING IS THE SOLE PROPERTY OF STORYWALK SOLUTIONS. NO PART OF THIS DRAWING IS TO BE REPRODUCED OR TRANSMITTED IN ANY FORM OR BY ANY MEANS, WITHOUT THE WRITTEN PERMISSION OF STORYWALK SOLUTIONS. PROPRIETARY AND CONFIDENTIAL